



**TOWN OF HARTFORD
SPECIAL SELECTBOARD AGENDA**

Tuesday, October 29, 2019, 6:00pm
Hartford Town Hall
171 Bridge Street
White River Junction, VT 05001

I. Call to Order the Selectboard Meeting

II. Pledge of Allegiance

III. Local Liquor Control Board: N/A

IV. Order of Agenda

V. Selectboard

1. Public, Selectboard Comments and Announcements: TBD

2. Appointments: N/A

3. Town Manager's Report: N/A

4. Board Reports, Motions & Ordinances

- a. Downtown Parking Workshop: Meter System, Parking Structure Options, Ordinance Revisions. (Information Only)

5. Commission Meeting Reports: TBD

6. Consent Agenda (Mot Req.): N/A

7. Executive Sessions: N/A

8. Adjourn the Selectboard Meeting. (Mot Req.)

All Meetings of the Hartford Selectboard are open to the public. Persons who are seeking action by the Selectboard are asked to submit their request and/or materials to the Selectboard Chair or Town Manager's office no later than noon on the Wednesday preceding the scheduled meeting date. Requests received after that date will be addressed at the discretion of the Chair. Citizens wishing to address the board should do so during the Citizen Comments period.



Parking Solutions Workshop





Presentation Overview



- Parking Solution Overview
- Parking Demand Overview
- Parking Meter Proposal Overview
- Proposed Parking Garage Update
- Update on Parking Ordinances



Parking Solutions Overview



Our goal is to create an integrative parking system that...

- Encourages safe traffic flow
- Is easy to use and understand
- Provides opportunities for user to 'self-police' their usage, encouraging turnover
- Minimizes police presence with remote capabilities
- Provides capacity for growth and change within our downtown district
- Is a living system that is able to evolve as transportation, energy resources, and lifestyles transition
- Develop a sustainable fee system that is comparable regionally and also supports the parking infrastructure
- Parking ordinances that are consistent with State of Vermont regulations
- Guides implementation of a winter parking and snow removal operations that better support safe and efficient storm response management



Parking Demand Overview



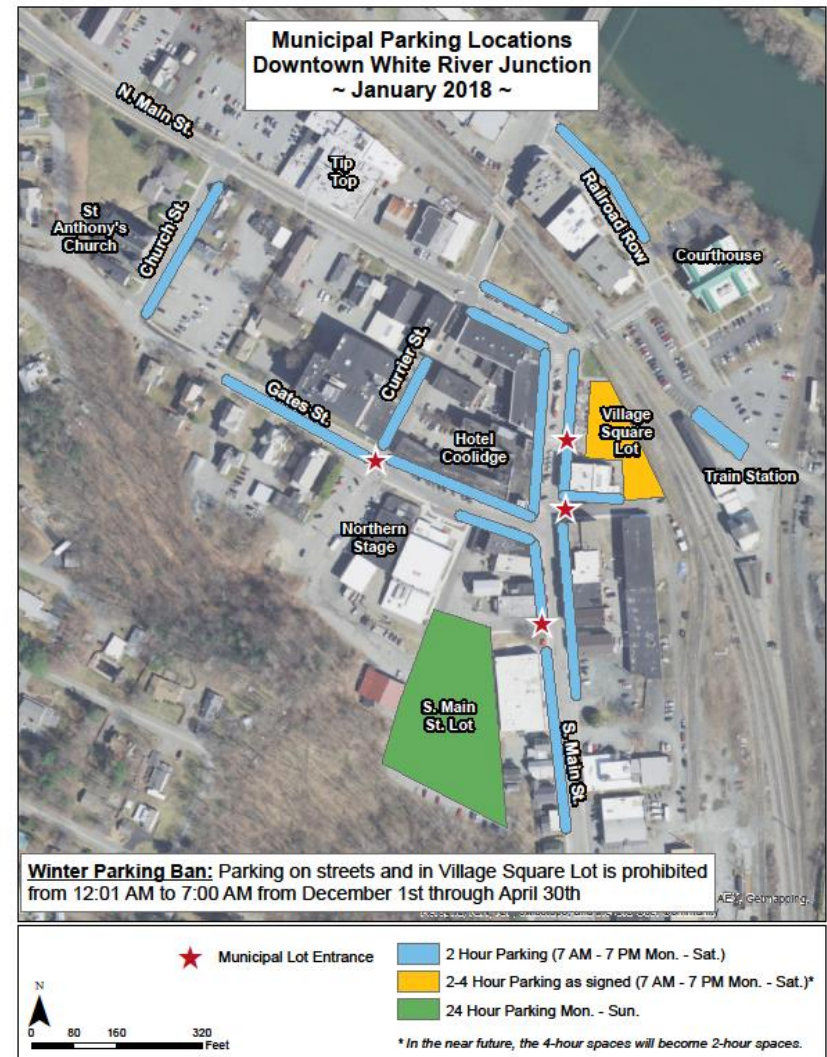
- Since 2015 we have seen a significant upward trend in the demand for public parking with the build-out of the 2009 Downtown WRJ Revitalization Plan and TIF District, including a significant amount of new housing units and commercial space.
- Over the past three years, there have been...
 - Dramatic increases in evening (6:30-8:30 p.m.) parking occupancy related to growth in number of events and thriving restaurant scene
 - Steady increases in mid-day (12:00-1:00 p.m.) parking occupancy, and consistently having the highest occupancy rate
 - At or near full occupancy in the downtown core sections
 - Steady increases in the mid-morning (9:45-10:45 a.m.) and mid-afternoon (2:30-3:15 p.m.) periods.



Map of Metered Areas



- Village Square Lot
- Curbed, 2 hour spaces in the downtown area





Overview of Price Quote

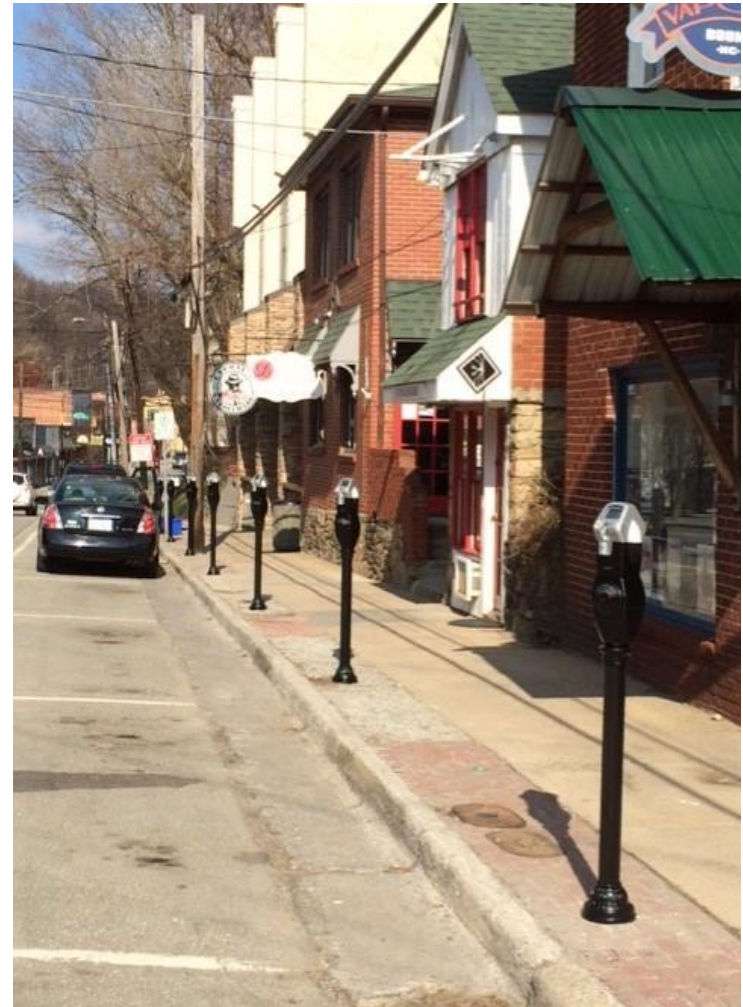


IPS Parking System Proposal

- System costs \$160,000 + installation & contingency
 - Proposed funding source: unassigned GF balance
- Features of IPS System
 - Variety of payment options; simple price structure
 - Technology facilitates enforcement
 - Online payment for streamlined back-end collections
- Estimated time for system cost recovery: 2 years
- Recommendation to proceed



IPS Parking Meters

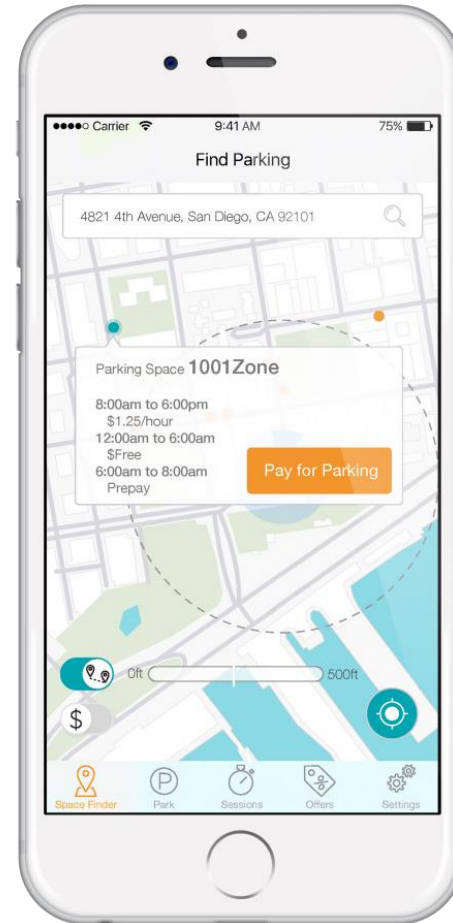




Overview of IPS

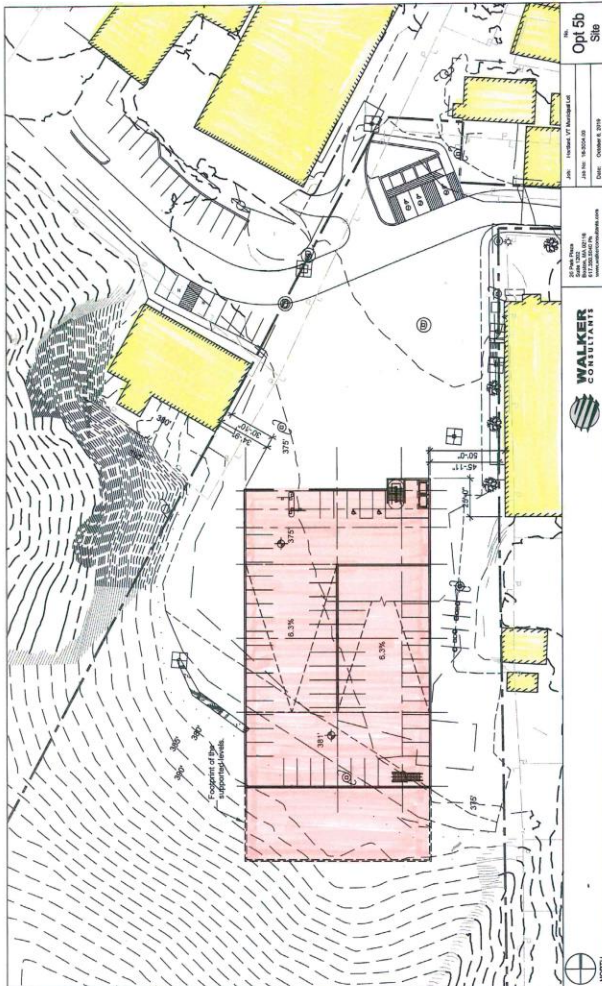


- Largest parking system company in the US
- Available for procurement through collective bidding organizations
- Widely used in the region with positive feedback (Burlington, Montpelier, Woodstock, Hanover, Brattleboro)
- Wide variety of physical and technical solutions to meet both our needs and user needs





Parking Garage



- Dubois and King and Walker Consultants have developed very preliminary design alternatives for our review
- These will be presented at the meeting



Parking Ordinance



Revisions have been drafted to the Code of the Town of Hartford, Chapter 220, Vehicles & Traffic to align with state statute in several areas, including:

- Signage
- General Parking Prohibitions; *sidewalks, crosswalks, intersections, etc*
- Fire Lanes & Hydrants
- Accessible Parking



Parking – Electric Vehicle



§ 220-52 **Electric Vehicle.**

Any car, truck or other vehicle that does not produce a tailpipe or evaporative emissions or is a plug-in hybrid electric vehicle (PHEV).

§ 220-53 **Reserved Parking for the Recharging of Electric Vehicles.**

Any parking spaced designated by the Town for the recharging of an electric vehicle.

§ 220-54 **Restrictions.**

- (a) It shall be unlawful for any person to park or leave standing a vehicle in a marked space designated for the recharging of electric vehicles, unless the vehicle is connected to the supplied power source for electric charging purposes.
- (b) It shall be unlawful for any person to obstruct, block, or otherwise bar access to parking or spaces described in Subsection (a), except as provided in Subsection (a).
- (c) Parking spaces for reserved parking for recharging of electric vehicles shall be designated and identified by appropriate signage.
- (d) Designation of reserved parking spaces for recharging of electric vehicles. The Select Board may designate reserved parking spaces for recharging of electric vehicles as it deems necessary and appropriate by resolution, provided that any space so designated complies with all of the requirements of this subsection.



Parking – Wilder Park & Ride



§ 220-15 Wilder Park and Ride

Park and Ride programs provide safe and convenient parking facilities to encourage the consolidation of travelers and reduction of single occupancy vehicles on the roads. The Hartford Park and Ride, a town owned and maintained facility, is located at 15 Hewitt Street and consists of 38 individual parking spaces. While Park and Ride facilities are generally safe places to park, motorists are reminded not to leave valuable items in vehicles. Use of the Hartford Park and Ride facility is entirely at vehicle owners' risk.

1. The following restrictions apply:

- (a) No vehicles shall be parked at the Hartford Park and Ride longer than seven business days. Violators will be towed at their own expense.
- (b) The Park and Ride facility shall not be utilized as a base of operations for any commercial business such as taxi or rideshare operation, to include the parking of vehicles bearing commercial markings or otherwise used for commercial purposes.
- (c) Camping or overnight sleeping is not permitted in the Park and Ride facility.
- (d) No unregistered or otherwise abandoned vehicles shall be allowed to be parked in the Park and Ride facility.



Winter Storm Parking Management



An effective, easy to understand parking plan that facilitates safe and expedient clean-up would be greatly facilitated with a parking garage, (due to covered parking).

- Current capacity to shift parking users around is limited
- Current focus is on improving communication of emergency snow removal operations



Parking Solutions Workshop



Next Steps/Recommendations:

- Seeking approval:
 - To proceed on meter system
 - General preferences on Parking structure design options to finalize and prepare for presentation at future public information meeting
 - To Proceed with legal review of Ordinance update

Questions?